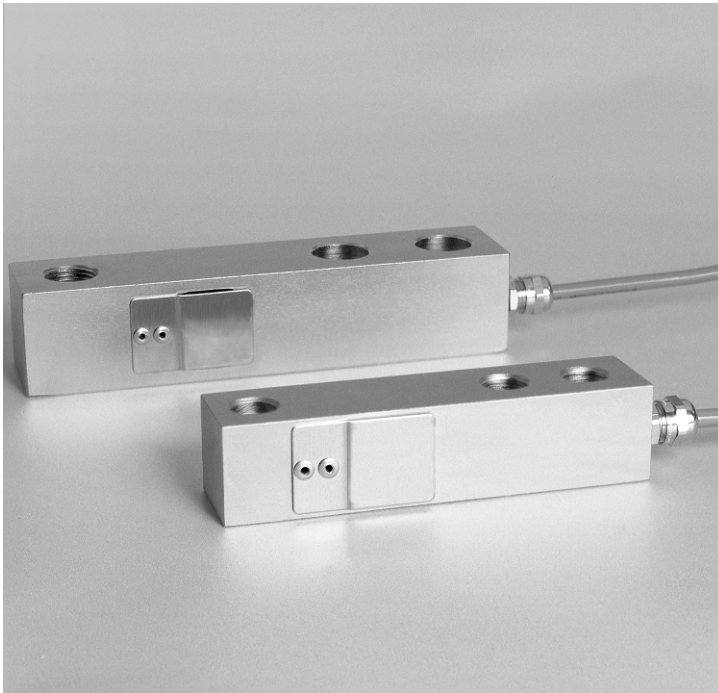


# BS23

## Single Ended Shear Beam Load Cell

**TRUE-TEC**

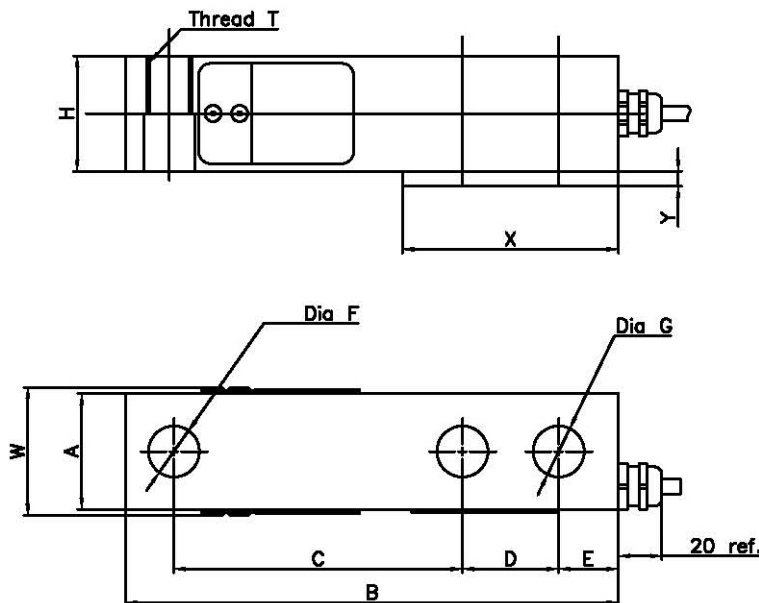
Quality by Advanced Technology



### FEATURES

- Capacity 1000Lb-10kLb
- Low Profile for Industrial Platforms
- Nickel Plated Alloy Steel Construction
- 6 wire (sense) Circuit
- PU Cable
- IP67 protection
- Various Options available

### OUTLINE DIMENSIONS



### MOUNTING

8.8 screws with socket head, tightening torque 136NM for capacities up to 4000Lb, and 205NM for capacities above 4000Lb

TYPE	CAPACITY lbs	A	B	C	D	E	Dia F	Dia G	H	W	T	X	Y
1	1K,1.5K,2.5K,4K,5K	30.5	130	76.2	25.4	16	13.5	13.5	30.5	33.9	M12 or 1/2-20	57	4
2	5K,7.5K,10K	37	171.5	95.4	38.1	19	19.8	19.8	37	40.9	M18 or 3/4-16	76	7.5

Note:  
X and Y are the suggested dimension for spacer.

## SPECIFICATION

PARAMETER	UNIT	VALUE		
		N	P	R
True-Tec Grade		N	P	R
Rated capacity ( $E_{max}$ )	Lb	1000, 1500, 2500, 4000, 5000, 7500, 10000		
Sensitivity	mV/V	3.0000		
Sensitivity tolerance	± mV/V	0.0030		
Current Calibration	± %	0.050		
Zero balance	± mV/V	0.0300		
Creep over 30min.	± %	0.0300	0.0167	0.0167
Temperature effect on zero	± %/°C	0.0035	0.0023	0.0014
Temperature effect on output	± %/°C	0.0030	0.0012	0.0012
Nominal temperature range	°C	-10 to +45		
Service temperature range	°C	-30 to +80		
Limit load	% of R.C.	>150		
Break load	% of R.C.	>300		
Nominal excitation	V	10		
Max. excitation	V	15		
Input impedance	Ohm	385 ± 10		
Output impedance	Ohm	351 ± 5		
Insulation resistance	MOhm	>2000		
Compensation circuit type		Balanced Bridge		
Cable length	Meter	3*		
Cable type	Standard	6x26 AWG, Gray PU Jacket		
Color code		+exc -green, +sig-red, -exc-black, -sig- white, +sen-blue, -sen-gray		
Construction		Nickel Plated Alloy Steel		
Protection class to IEC529		IP 67		

\* Optional cable length available to order

## APPLICATIONS

Model BS23 is a low profile single ended shear beam load cell designed for high accuracy platform scales, pallet scales and process weighing applications. It has high immunity to shock or side loading. Nickel plating and full environmental sealing assure long term reliability.

The two additional sense wires feed back the voltage reaching the load cell. Complete compensation of changes in lead resistance due to temperature change and/or cable extension, is achieved by feeding this voltage into the appropriate electronics.

Also Available from True-Tec: The Model BS23 load cell can be supplied with self leveling rubber feet for use in low profile platforms. Cellmates and Tank mounts are also available.

Due to True-Tec's Policy of continuous development, these specifications are subject to change without notice.  
All details describe our products in general form only. They are not to be understood as express warranty and do not constitute any liability whatsoever.

### Beijing True-Tec Co., Ltd.

4/F, Bldg. 2, No. 8, Hong Da Bei Lu  
BDA, Beijing 100176, China  
Tel.: +86-10-67869219 Fax: +86-10-67862581  
E-mail: [info@true-tec.com](mailto:info@true-tec.com) [www.true-tec.com](http://www.true-tec.com)