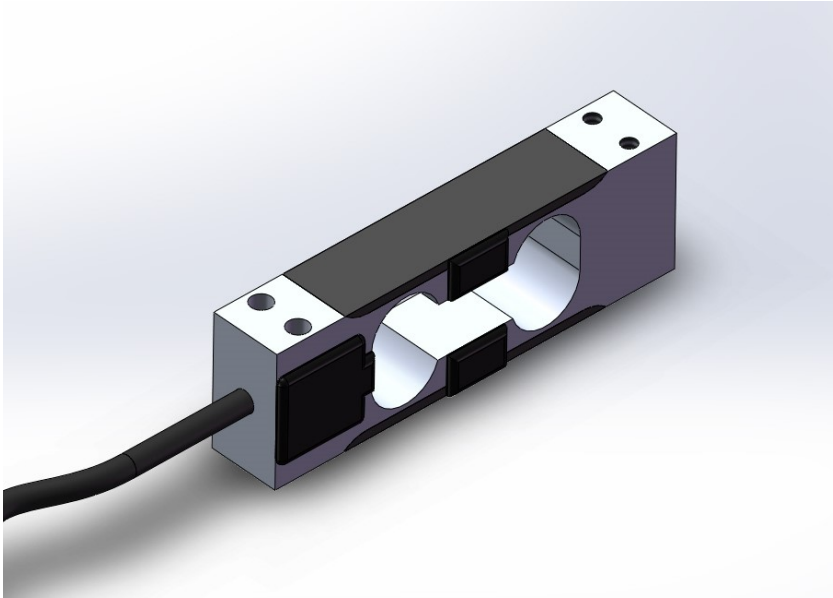


PA02F

Single Point Aluminum Load Cell

TRUE-TEC

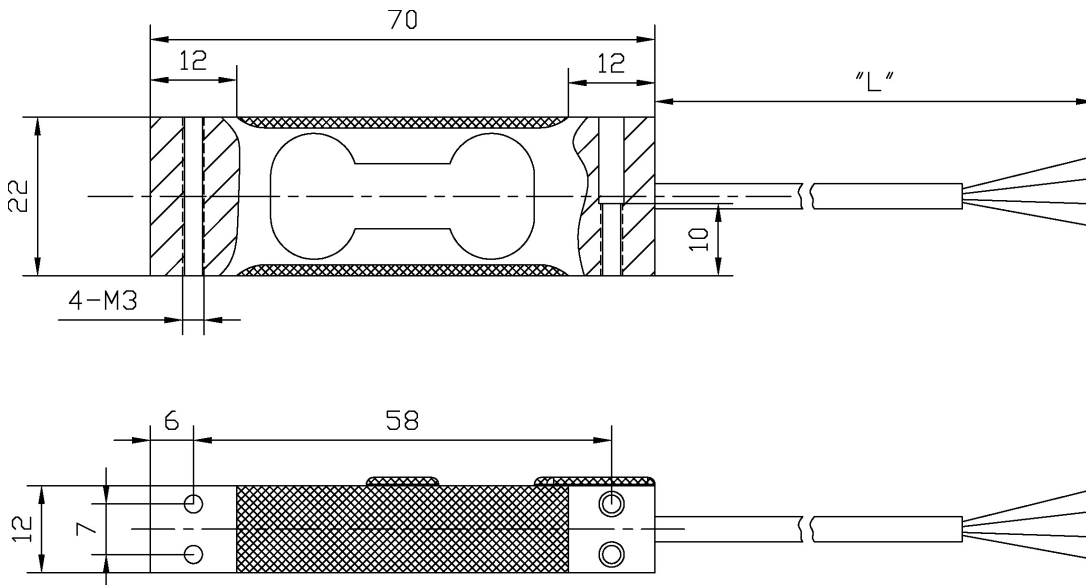
Quality by Advanced Technology



FEATURES

- Capacity 300g-5kg
- Up to 60,000 divisions short term precision at room temperature
- Single point 200x200 mm platform
- IP66 protection
- Interchangeable with C2X1, PW4M, 1006.

OUTLINE DIMENSIONS



MOUNTING

M3-8.8 screws with socket head, tightening torque 1.4NM

SPECIFICATION

PARAMETER	UNIT	VALUE		
Rated capacity (E_{max})		300g, 600g		1kg, 2kg, 3kg, 5kg
Sensitivity	mV/V	1.00		2.00
Sensitivity tolerance	± mV/V	0.10		0.20
Zero balance	± mV/V	0.10		
True-Tec Grade		R	S	U
Creep (From stable to 2min)	± %	0.0085	0.0050	0.0033
Creep over 30min	± %	0.0167	0.0125	0.0100
Temperature effect on zero	± %/ °C	0.0040	0.0033	0.0025
Temperature effect on output	± %/ °C	0.0014	0.0012	0.0010
Hysteresis	%	0.0080	0.0045	0.0036
Linearity deviation	%	0.0120	0.0100	0.0060
Repeatability	%	0.0090	0.0050	0.0040
Eccentric loading error	% /cm	0.0042		
Nominal temperature range	°C	-10 to +40		
Service temperature range	°C	-30 to +70		
Limit load	% of R.C.	200		
Break load	% of R.C.	300		
Nominal excitation	V	5		
Max. excitation	V	15		
Input impedance	Ohm	405 ± 15		
Output impedance	Ohm	350 ± 3		
Insulation resistance	MOhm	>2000		
Cable length	Meter	0.35		
Cable type		4x28 AWG, Aluminum Mylar Shielded, Black PVC Jacket		
Color code		+Exc -Green, +Sig-Red, -Exc-Black, -Sig- White		
Construction		Aluminum Alloy		
Compensation circuit type		Balanced Bridge		
Protection class to IEC529		IP 66		

APPLICATIONS

Model PA02F is a very low capacity, high precision single point load cell designed for direct mounting in low capacity scales and precision balances.

The PA02F offers up to 60,000 divisions' short term precision at room temperature. This load cell is suitable for applications including postal scales, counting scales, precision balances, and is also suitable for a wide variety of force measurement applications, such as industry process control where the acting center of force application is within 100mm from the load cell vertical axis.

Due to True-Tec's Policy of continuous development, these specifications are subject to change without notice.
All details describe our products in general form only. They are not to be understood as express warranty and do not constitute any liability whatsoever.

Beijing True-Tec Co., Ltd.

4/F, Bldg. 2, No. 8, Hong Da Bei Lu
BDA, Beijing 100176, China
Tel.: +86-10-67869219 Fax: +86-10-67862581
E-mail: info@true-tec.com www.true-tec.com