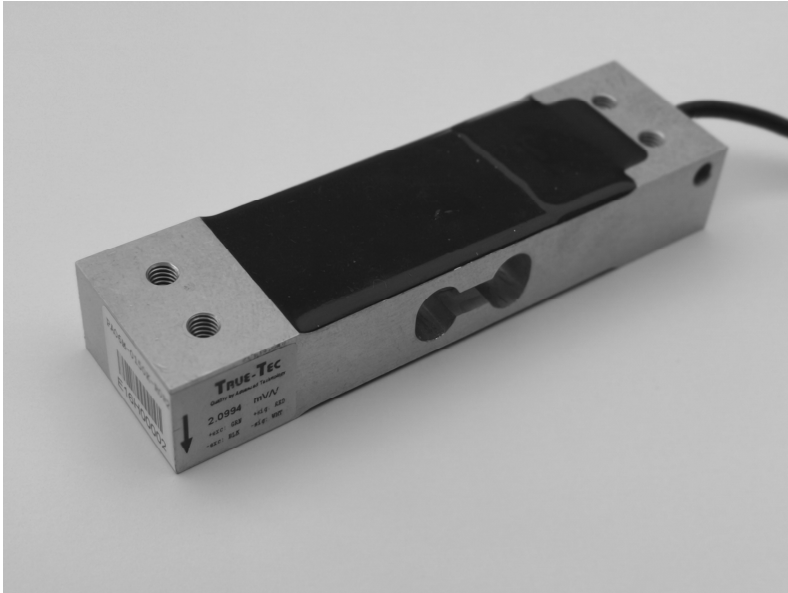


PA06R

Single Point Aluminum Load Cell

TRUE-TEC

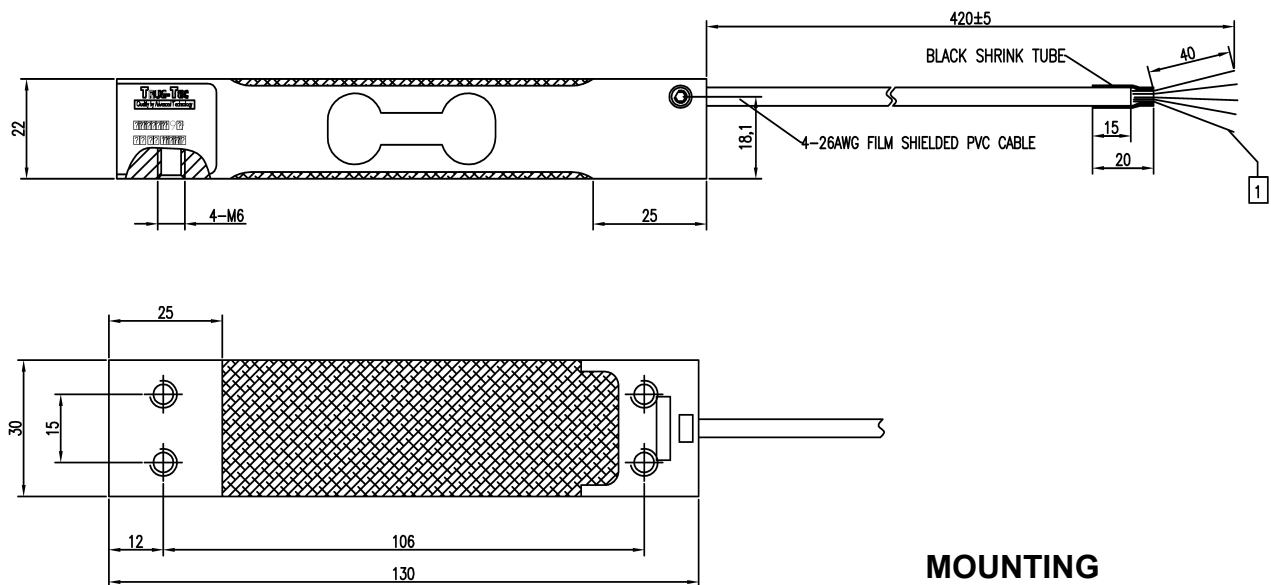
Quality by Advanced Technology



FEATURES

- Capacity 3-200kg
- Aluminum Alloy Construction
- Specially designed for dynamic weighing
- Single point 350x350 mm platform
- OIML approved to C6 class, NTEP approved to class IIIS, 6000d.
- IP66 protection
- HBM PW6D compatible

OUTLINE DIMENSIONS



Capacity	"W"±0.1
3kg, 5kg	24
7kg up to and include 75kg	30
100kg up to and include 200kg	36

MOUNTING

M6-8.8 screws with socket head, tightening torque 7NM

SPECIFICATION

PARAMETER	UNIT	VALUE		
True-Tec Grade		R	T	V
Rated capacity (E_{max})	kg	3, 5, 7, 10, 15, 20, 30, 35, 50, 75, 100, 150, 200		
Sensitivity	mV/V	2.00		
Sensitivity tolerance	± mV/V	0.20		
Zero balance	± mV/V	0.10		
Maximum Number of Intervals		3000	4000	6000
$Y=E_{max}/V_{min}$	Minimum	10000	10000	12000
$Z=E_{max}/(2*DR)$	Minimum	3000	4000	6000
Eccentric loading error	±%/cm	0.0036	0.0036	0.0024
Maximum platform size	cm	35x35		
Nominal temperature range	°C	-10 to +40		
Service temperature range	°C	-30 to +70		
Limit load	% of R.C.	>150		
Break load	% of R.C.	>300		
Nominal excitation	V	10		
Max. excitation	V	15		
Input impedance	Ohm	406 ±15		
Output impedance	Ohm	350 ± 3		
Insulation resistance	MOhm	>2000		
Compensation circuit type		Balanced Bridge		
Cable length	m	0.4		
Cable type		4x26 AWG, Black PVC Jacket		
Color code		+exc -green, +sig-red, -exc-black, -sig- white		
Construction		Aluminum		
Protection class to IEC529		IP 66		

APPLICATIONS

Model PA06R is a low profile single point load cell designed for dynamic weighing applications, and where cable exit from backside is required.

Its small physical size, combined with high accuracy and aluminum construction, makes this low cost load cell ideally suited for retail, bench and counting scales where savings in parts and labor due to simpler scales construction can be made.

Environment protection to IP66 is provided as standard. Special humidity protection for waterproof scale is available on order.

Due to True-Tec's Policy of continuous development, these specifications are subject to change without notice.
All details describe our products in general form only. They are not to be understood as express warranty and do not constitute any liability whatsoever.

Beijing True-Tec Co., Ltd.

4/F, Bldg. 2, No. 8, Hong Da Bei Lu
BDA, Beijing 100176, China
Tel.: +86-10-67869219 Fax: +86-10-67862581
E-mail: info@true-tec.com www.true-tec.com