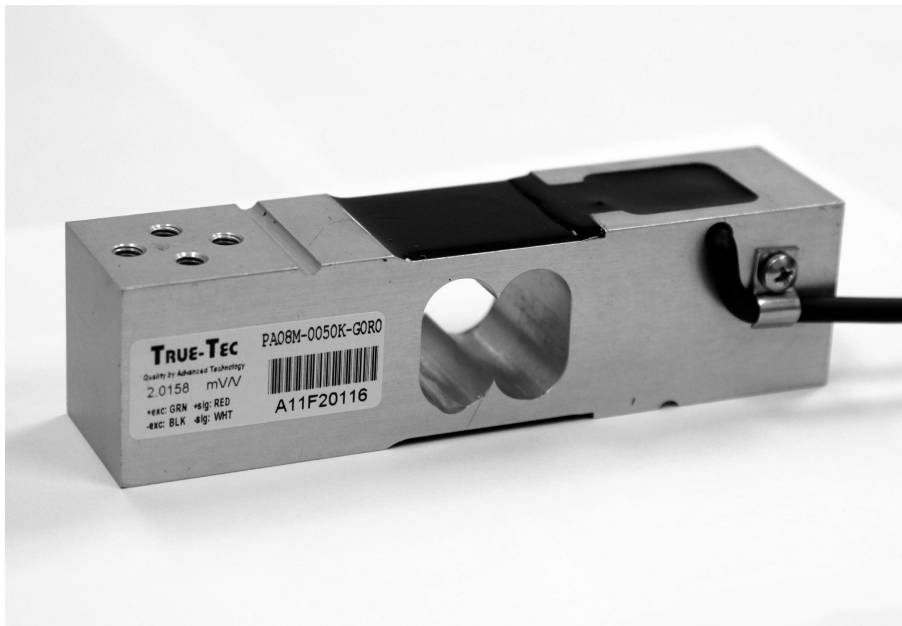


# PA08L

## Single Point Aluminum Load Cell

**TRUE-TEC**

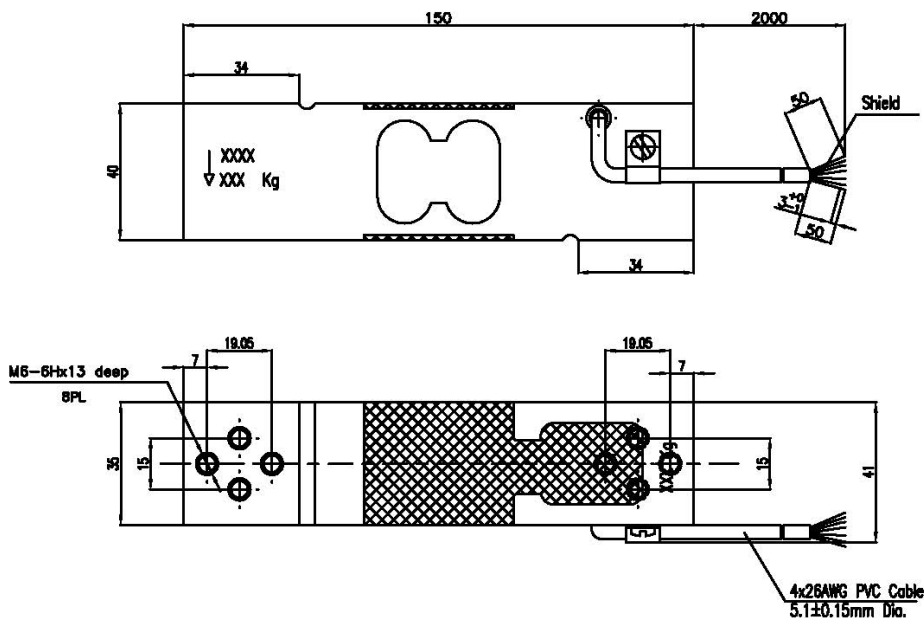
Quality by Advanced Technology



### FEATURES

- Capacity 50-300kg
- Aluminum Construction
- Single point 400x400 mm platform
- OIML R60 Approved to C4 Class
- IP66 protection

### OUTLINE DIMENSIONS



### MOUNTING

M6 8.8 screws with socket head, tightening torque 7NM

## SPECIFICATION

PARAMETER	UNIT	VALUE		
True-Tec Grade		P	R	T
OIML Accuracy		C2.5	C3	C4
Rated capacity ( $E_{max}$ )	kg	50, 60, 100, 150, 200, 250, 300		
Sensitivity	mV/V	2.00		
Sensitivity tolerance	± mV/V	0.20		
Zero balance	± mV/V	0.10		
Maximum Number of Intervals		2500	3000	4000
$Y=E_{max}/V_{min}$	Minimum	6000	10000	10000
$Z=E_{max}/(2*DR)$	Minimum	2500	3000	4000
Eccentric loading error	±%/cm	0.0049	0.0049	0.0042
Maximum platform size	cm	40x40		
Nominal temperature range	°C	-10 to +40		
Service temperature range	°C	-30 to +70		
Limit load	% of R.C.	150		
Break load	% of R.C.	300		
Nominal excitation	V	10		
Max. excitation	V	15		
Input impedance	Ohm	406 ± 15		
Output impedance	Ohm	350 ± 3		
Insulation resistance	MOhm	>2000		
Compensation circuit type		Balanced Bridge		
Cable length	Meter	2.0		
Cable type		4x26 AWG, Black PVC Jacket		
Color code		+exc -green, +sig-red, -exc-black, -sig- white		
Construction		Aluminum		
Protection class to IEC529		IP 66		

## APPLICATIONS

Model PA08L is a low profile, single point load cell designed for industrial applications where space is limited. Typical applications include platforms, hanging scales, and person scales.

A special humidity resistant protective coating assures long-term stability over the entire compensated temperature range.

The PA08L provides scale manufacturers with a high accuracy low cost sensor to meet today's needs.

Due to True-Tec's Policy of continuous development, these specifications are subject to change without notice.

All details describe our products in general form only. They are not to be understood as express warranty and do not constitute any liability whatsoever.

### Beijing True-Tec Co., Ltd.

4/F, Bldg. 2, No. 8, Hong Da Bei Lu

BDA, Beijing 100176, China

Tel.: +86-10-67869219 Fax: +86-10-67862581

E-mail: [info@true-tec.com](mailto:info@true-tec.com) [www.true-tec.com](http://www.true-tec.com)