

# TT16

## Stainless Steel Tensile Load Cell

**TRUE-TEC**

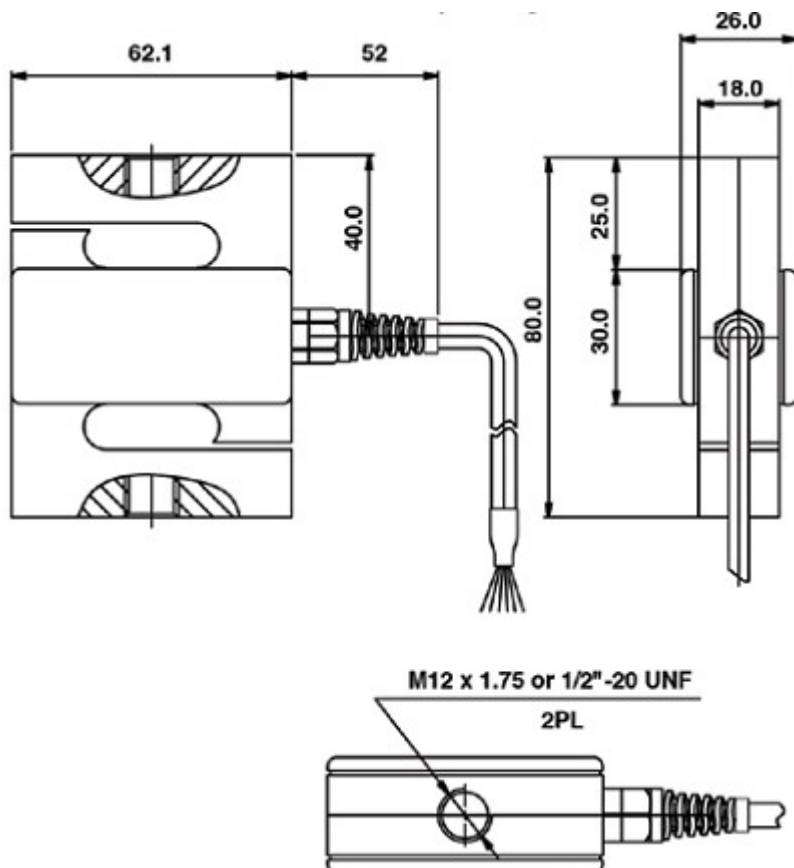
Quality by Advanced Technology



### FEATURES

- Capacity 50-1000kg
- Stainless Steel Construction
- IP67 protection
- Vishay 616 Compatible

### OUTLINE DIMENSIONS



## SPECIFICATION

PARAMETER	UNIT	VALUE	
True-Tec Grade		N	P
Maximum Number of Intervals		2000	3000
Rated capacity ( $E_{max}$ )	kg	50, 100, 150, 200, 300,500,750,1000	
Sensitivity	mV/V	2.00	
Sensitivity tolerance	$\pm$ mV/V	0.002	
Zero balance	$\pm$ mV/V	0.2	
Nominal temperature range	°C	-10 to +40	
Service temperature range	°C	-30 to +70	
Limit load	% of R.C.	150	
Break load	% of R.C.	300	
Nominal excitation	V	10	
Max. excitation	V	15	
Input impedance	Ohm	400 $\pm$ 20	
Output impedance	Ohm	350 $\pm$ 3	
Insulation resistance	MOhm	>2000	
Compensation circuit type		Balanced Bridge	
Cable length	Meter	3.0	
Cable type		6-wire,PVC,single floating screen	
Color code		+exc -green, +sig-red, -exc-black, -sig- white ,+sen-blue,-sen-gray	
Construction		17-4PH Stainless Steel	
Protection class to IEC529		IP 67	

## APPLICATIONS

Model TT16 is a tension compression load cell designed for industrial applications. Typical applications include lever conversions, hanging scales, force measurement and so on.

The TT16 provides scale manufacturers with a high accuracy low cost sensor to meet today's needs.

Due to True-Tec's Policy of continuous development, these specifications are subject to change without notice.

All details describe our products in general form only. They are not to be understood as express warranty and do not constitute any liability whatsoever.

### Beijing True-Tec Co., Ltd.

4/F, Bldg. 2, No. 8, Hong Da Bei Lu,

BDA, Beijing 100176, China

Tel.: +86-10-67869219 Fax: +86-10-67862581

E-mail: [info@true-tec.com](mailto:info@true-tec.com) [www.true-tec.com](http://www.true-tec.com)